

# Windmill Islands

Map 4 of 5

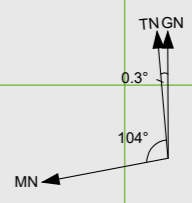
Edition 11

Horizontal Datum: WGS84  
Projection: UTM Zone 49

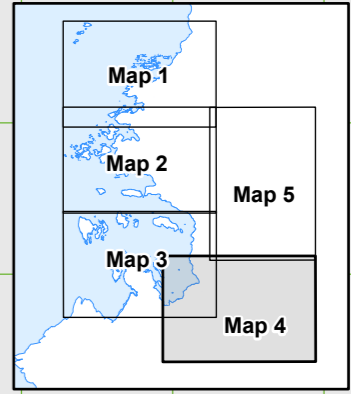


Scale 1 : 50 000

Produced by the Australian Antarctic Data Centre  
October 2022, Map Catalogue Number: 15789  
© Commonwealth of Australia



True, Grid and Magnetic North are shown diagrammatically for the centre of this map. Magnetic North is correct for December 2022 and moves westerly by about 0.29° per year.



- 102 Spot elevation (m)
- A-07 Route, Waypoint
- - - Route (approximate)  
All sea ice routes are approximate
- Crevasse
- Ice cliff
- Rock cliff
- Contour (20m interval)  
definite/approximate
- Contour (100m interval)  
definite/approximate
- Ice-free area
- Moraine

**CAUTION:** Absence of the depiction of hazards, including crevasses, does not necessarily indicate a hazard free area.

Australian Government  
Department of Climate Change, Energy,  
the Environment and Water  
Australian Antarctic Division