

Windmill Islands

Map 5 of 5

Edition 11

Horizontal Datum: WGS84
Projection: UTM Zone 49



Scale 1 : 50 000

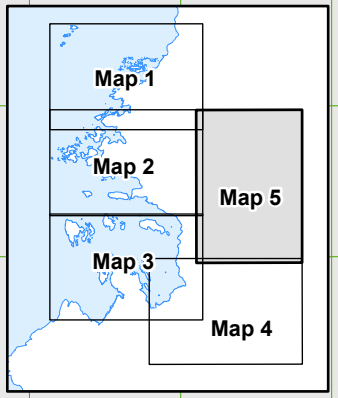
Produced by the Australian Antarctic Data Centre
October 2022, Map Catalogue Number: 15790
© Commonwealth of Australia



CAUTION: Absence of the depiction of hazards, including crevasses, does not necessarily indicate a hazard free area.

True, Grid and Magnetic North are shown diagrammatically for the centre of this map. Magnetic North is correct for December 2022 and moves westerly by about 0.29° per year.

- 102 Spot elevation (m)
 - A-07 Route, Waypoint
 - - - - Route (approximate)
All sea ice routes are approximate
 - Crevasse
 - - - - Contour (20m interval)
definite/approximate
 - - - - Contour (100m interval)
definite/approximate
- Crevasses mapped from aerial photography, January 1994.



Australian Government
Department of Climate Change, Energy,
the Environment and Water
Australian Antarctic Division