

Windmill Islands

Map 1 of 5
Edition 1

Horizontal Datum: WGS84
Projection: UTM Zone 49

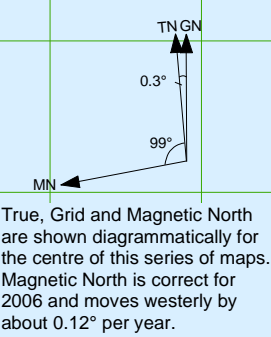


Scale 1 : 50 000

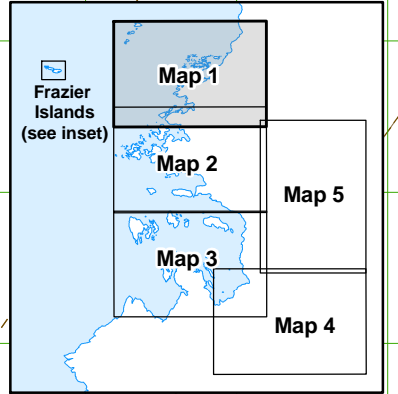
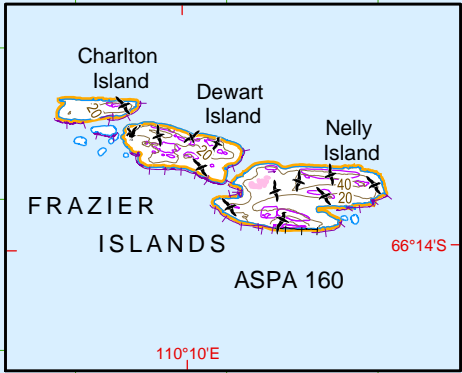
Produced by the Australian Antarctic Data Centre
September 2006, Map Catalogue Number: 13297



Australian Government
Department of the
Environment and Heritage
Australian Antarctic Division



True, Grid and Magnetic North
are shown diagrammatically for
the centre of this series of maps.
Magnetic North is correct for
2006 and moves westerly by
about 0.12° per year.



Legend

- 102 Spot height
 - + Reef
 - ◆ Refuge
 - A-07 Waypoint
 - ◆ Emergency cache
 - IRB landing site
 - Station year round/abandoned
 - ⊕ Helicopter landing area with/without facilities
 - Crevasse
 - Route
 - Ice cliff
 - Rock cliff
 - Contour (20m interval) definite/approximate
 - Contour (100m interval) definite/approximate
 - Lake
 - Ice-free area
 - Moraine
 - Lichen
 - Bryophytes
 - Adélie penguin colony
 - Antarctic petrel nest/colony
 - Cape petrel nest/colony
 - Snow petrel nest/colony
 - South polar skua nest/colony
 - Southern fulmar nest/colony
 - Southern giant-petrel nest/colony
 - Wilsons storm petrel nest/colony
 - Southern elephant seal haulout site
 - Weddell seal haulout site
 - Weddell seal pupping site
 - Antarctic Specially Protected Area (ASPA)
- Entry is prohibited without a permit. All activities must be in accordance with the management plan.

For more detail see:
Casey Station Area
Map No.13021

CAUTION: Absence of the depiction of crevasses does not necessarily indicate a crevasse free area.

To Wilkins Runway

To Law Dome

To Robinson Ridge

Aircraft wreck
Crashed 9 November 1961