

Windmill Islands

Map 3 of 5

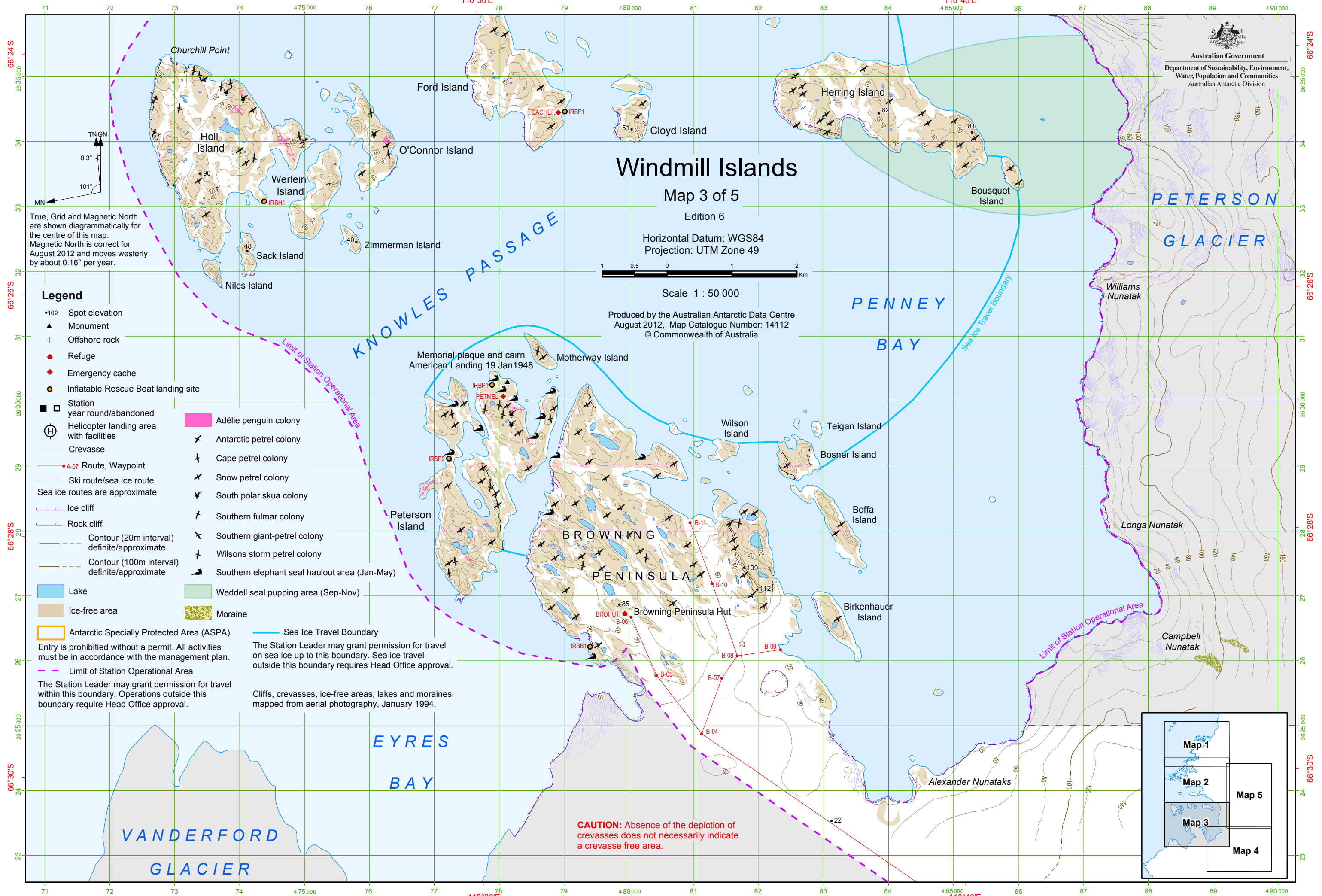
Edition 6

Horizontal Datum: WGS84
 Projection: UTM Zone 49

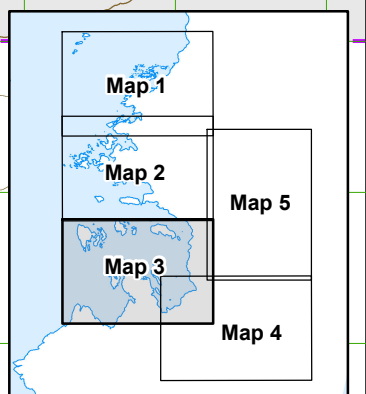


Scale 1 : 50 000

Produced by the Australian Antarctic Data Centre
 August 2012, Map Catalogue Number: 14112
 © Commonwealth of Australia



- ### Legend
- 102 Spot elevation
 - ▲ Monument
 - + Offshore rock
 - ◆ Refuge
 - ◆ Emergency cache
 - Inflatable Rescue Boat landing site
 - year round/abandoned
 - ⊕ Helicopter landing area with facilities
 - Crevasse
 - A-07 Route, Waypoint
 - Ski route/sea ice route
Sea ice routes are approximate
 - Ice cliff
 - Rock cliff
 - Contour (20m interval) definite/approximate
 - Contour (100m interval) definite/approximate
 - Lake
 - Ice-free area
 - Antarctic Specially Protected Area (ASP)
 - Limit of Station Operational Area
- Adélie penguin colony
 - ✕ Antarctic petrel colony
 - ✕ Cape petrel colony
 - ✕ Snow petrel colony
 - ✕ South polar skua colony
 - ✕ Southern fulmar colony
 - ✕ Southern giant-petrel colony
 - ✕ Wilsons storm petrel colony
 - ✕ Southern elephant seal haulout area (Jan-May)
 - Weddell seal pupping area (Sep-Nov)
 - Moraine
- Sea Ice Travel Boundary
 The Station Leader may grant permission for travel on sea ice up to this boundary. Sea ice travel outside this boundary requires Head Office approval.
- Cliffs, crevasses, ice-free areas, lakes and moraines mapped from aerial photography, January 1994.



CAUTION: Absence of the depiction of crevasses does not necessarily indicate a crevasse free area.