

Windmill Islands

Map 4 of 5

Edition 3

Horizontal Datum: WGS84
Projection: UTM Zone 49

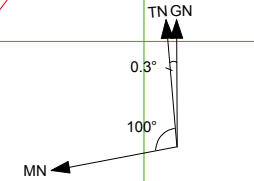


Scale 1 : 50 000

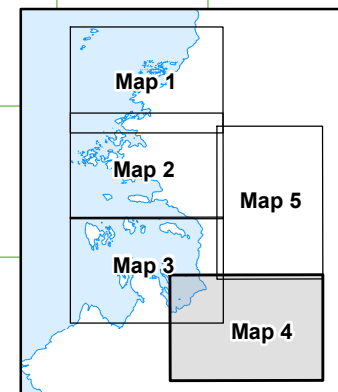
Produced by the Australian Antarctic Data Centre
September 2008, Map Catalogue Number: 13497



Australian Government
Department of the Environment,
Water, Heritage and the Arts
Australian Antarctic Division



True, Grid and Magnetic North are shown diagrammatically for the centre of this map. Magnetic North is correct for September 2008 and moves westerly by about 0.12° per year.



CAUTION: Absence of the depiction of crevasses does not necessarily indicate a crevasse free area.

Legend

- 102 Spot height
- A-07 Waypoint
- Route
- - - Ski route/sea ice route
Sea ice routes are approximate
- Crevasse
- Ice cliff
- Rock cliff
- Contour (20m interval)
definite/approximate
- Contour (100m interval)
definite/approximate
- Ice-free area
- Moraine

Casey Waypoint Information

September 2008

| Wpt Name | Latitude | Longitude | Wpt Description | Alt (m) |
|-----------------------|------------|------------|---|---------|
| Law Dome Route | | | | |
| A-00 | -66 16.938 | 110 31.622 | Red Shed Heli Pad | 43 |
| A-01 | -66 16.934 | 110 32.104 | Lower Heli Pads | 37 |
| A-02 | -66 17.103 | 110 32.226 | Drum - station side of Penguin Pass | 45 |
| A-03 | -66 17.362 | 110 32.645 | Drum | 41 |
| A-04 | -66 17.335 | 110 33.376 | Flour drum on pole - Robbo's turnoff | 45 |
| A-05 | -66 17.258 | 110 34.328 | Drum | 54 |
| A-06 | -66 17.153 | 110 35.604 | Flour drum on pole - Wilkes turnoff | 100 |
| A-07 | -66 17.074 | 110 36.579 | Flour drum on pole | 147 |
| A-08 | -66 16.936 | 110 39.372 | Drum - S1 - Jack's / Law Dome / Skiway turnoff | 242 |
| D-01 | -66 17.152 | 110 41.631 | Flour drum on steel pole | 295 |
| D-02 | -66 18.739 | 110 51.740 | Drum (signpost & radio masts) - Lanyon Junction | 480 |
| D-03 | -66 19.256 | 110 55.353 | Cane | 520 |
| D-04 | -66 19.894 | 110 59.992 | Flour drum x 2 on steel pole | 562 |
| D-05 | -66 20.653 | 111 05.260 | Steel pole (just visible) | 616 |
| D-06 | -66 21.377 | 111 10.466 | Drum (just visible) & steel pole | 669 |
| D-07 | -66 22.176 | 111 16.266 | Drum (half buried) | 728 |
| D-08 | -66 22.699 | 111 19.942 | Cane | 755 |
| D-09 | -66 23.281 | 111 24.086 | Cane | 796 |
| D-10 | -66 24.059 | 111 29.586 | Drum (just visible) | 847 |
| D-11 | -66 24.752 | 111 34.508 | Drum | 885 |
| D-12 | -66 25.483 | 111 39.686 | Steel pole | 930 |
| D-13 | -66 26.432 | 111 46.422 | Steel pole | 971 |
| D-14 | -66 26.981 | 111 50.770 | Cane | 1007 |
| D-15 | -66 27.341 | 111 54.423 | Cane | 1024 |
| D-16 | -66 27.556 | 111 57.234 | 2 Steel poles - Blyth Junction | 1040 |
| D-17 | -66 28.626 | 112 00.655 | Drum & steel pole | 1071 |
| D-18 | -66 29.920 | 112 04.771 | Cane | 1106 |
| D-19 | -66 30.861 | 112 07.854 | Cane | 1136 |
| D-20 | -66 31.300 | 112 09.243 | Cane | 1143 |
| D-21 | -66 31.916 | 112 11.218 | No marker | 1159 |
| D-22 | -66 31.952 | 112 11.351 | No marker - S2 Hatch turnoff | 1159 |
| D-23 | -66 33.567 | 112 16.638 | Antarctic Circle sign | 1196 |
| D-24 | -66 35.759 | 112 23.653 | Cane | 1243 |
| D-25 | -66 36.887 | 112 27.355 | Cane | 1275 |
| D-26 | -66 38.108 | 112 31.422 | Cane | 1300 |
| D-27 | -66 39.750 | 112 36.856 | Cane | 1329 |
| D-28 | -66 41.601 | 112 42.930 | Cane | 1372 |
| D-29 | -66 43.938 | 112 45.389 | No marker | 1382 |
| DSSHAT | -66 46.151 | 112 48.440 | Cane x 2 - DSS Entry Hatch | 1385 |

| Wpt Name | Latitude | Longitude | Wpt Description | Alt (m) |
|------------------------------|------------|------------|--|---------|
| Jack's Donga Route | | | | |
| A-00 | -66 16.938 | 110 31.622 | Red Shed Heli Pad | 43 |
| A-01 | -66 16.934 | 110 32.104 | Lower Heli Pads | 37 |
| A-02 | -66 17.103 | 110 32.226 | Drum - station side of Penguin Pass | 45 |
| A-03 | -66 17.362 | 110 32.645 | Drum | 41 |
| A-04 | -66 17.335 | 110 33.376 | Flour drum on pole - Robbo's turnoff | 45 |
| A-05 | -66 17.258 | 110 34.328 | Drum | 54 |
| A-06 | -66 17.153 | 110 35.604 | Flour drum on pole - Wilkes turnoff | 100 |
| A-07 | -66 17.074 | 110 36.579 | Flour drum on pole | 147 |
| A-08 | -66 16.936 | 110 39.372 | Drum - S1 - Jack's / Law Dome / Skiway turnoff | 242 |
| J-01 | -66 15.383 | 110 39.214 | Cane | 184 |
| J-02 | -66 14.445 | 110 39.923 | Cane | 147 |
| J-03 | -66 13.841 | 110 39.606 | Drum - fallen | 103 |
| JACDON | -66 13.720 | 110 39.191 | Jack's Donga | |
| Robinsons Ridge Route | | | | |
| A-00 | -66 16.938 | 110 31.622 | Red Shed Heli Pad | 43 |
| A-01 | -66 16.934 | 110 32.104 | Lower Heli Pads | 37 |
| A-02 | -66 17.103 | 110 32.226 | Drum - station side of Penguin Pass | 45 |
| A-03 | -66 17.362 | 110 32.645 | Drum | 41 |
| A-04 | -66 17.335 | 110 33.376 | Flour drum on pole - Robbo's turnoff | 45 |
| R-01 | -66 17.473 | 110 33.799 | Drum | 57 |
| R-02 | -66 18.687 | 110 35.746 | Drum - Mitchell Peninsula turnoff | 122 |
| R-03 | -66 19.486 | 110 37.016 | Drum | 183 |
| R-04 | -66 20.067 | 110 38.232 | Drum (half buried) | 215 |
| R-05 | -66 21.154 | 110 40.503 | Drum - high point on route | 272 |
| R-06 | -66 21.483 | 110 40.031 | Cane x 2 & steel pole | 237 |
| R-07 | -66 22.459 | 110 38.846 | Drum | 140 |
| R-08 | -66 22.114 | 110 37.784 | Drum | 114 |
| R-09 | -66 22.159 | 110 36.136 | Drum | 66 |
| R-10 | -66 22.197 | 110 35.995 | Flour drum on pole | 65 |
| R-11 | -66 22.331 | 110 35.793 | Drum - stay close to avoid ice cliffs | 62 |
| ROBHUT | -66 22.405 | 110 35.129 | Robinsons Ridge Hut | 47 |

| Wpt Name | Latitude | Longitude | Wpt Description | Alt (m) |
|---------------------|------------|------------|--------------------------------------|---------|
| Wilkes Route | | | | |
| A-00 | -66 16.938 | 110 31.622 | Red Shed Heli Pad | 43 |
| A-01 | -66 16.934 | 110 32.104 | Lower Heli Pads | 37 |
| A-02 | -66 17.103 | 110 32.226 | Drum - station side of Penguin Pass | 45 |
| A-03 | -66 17.362 | 110 32.645 | Drum | 41 |
| A-04 | -66 17.335 | 110 33.376 | Flour drum on pole - Robbo's turnoff | 45 |
| A-05 | -66 17.258 | 110 34.328 | Drum | 54 |
| A-06 | -66 17.153 | 110 35.604 | Flour drum on pole - Wilkes turnoff | 100 |
| W-01 | -66 16.623 | 110 36.135 | Drum | |
| W-02 | -66 16.350 | 110 35.661 | Flour drum on pole | |
| W-03 | -66 15.818 | 110 34.761 | Drum | |
| W-04 | -66 15.709 | 110 34.461 | Flour drum on pole | |
| W-05 | -66 15.725 | 110 33.845 | Drum - stay N to avoid crevassing | |
| W-06 | -66 15.701 | 110 33.565 | Drum - stay N to avoid crevassing | |
| W-07 | -66 15.538 | 110 33.369 | Drum - Stay NE to avoid crevassing | 11 |
| W-08 | -66 15.503 | 110 32.531 | Drum | |
| W-09 | -66 15.423 | 110 32.050 | Drum | |
| WILHIL | -66 15.405 | 110 32.088 | Wilkes Hilton | |

| Wpt Name | Latitude | Longitude | Wpt Description | Alt (m) |
|-----------------------------|------------|------------|--|---------|
| Wilkins Runway Route | | | | |
| A-00 | -66 16.938 | 110 31.622 | Red Shed Heli Pad | 43 |
| A-01 | -66 16.934 | 110 32.104 | Lower Heli Pads | 37 |
| A-02 | -66 17.103 | 110 32.226 | Drum - station side of Penguin Pass | 45 |
| A-03 | -66 17.362 | 110 32.645 | Drum | 41 |
| A-04 | -66 17.335 | 110 33.376 | Flour drum on pole - Robbo's turnoff | 45 |
| A-05 | -66 17.258 | 110 34.328 | Drum | 54 |
| A-06 | -66 17.153 | 110 35.604 | Flour drum on pole - Wilkes turnoff | 100 |
| A-07 | -66 17.074 | 110 36.579 | Flour drum on pole | 147 |
| A-08 | -66 16.936 | 110 39.372 | Drum - S1 - Jack's / Law Dome / Skiway turnoff | 242 |
| A-09 | -66 19.139 | 110 44.212 | Drum | 361 |
| A-10 | -66 20.188 | 110 48.139 | Drum | 410 |
| A-11 | -66 21.261 | 110 52.014 | Drum | 448 |
| A-12 | -66 22.306 | 110 55.886 | Drum | 482 |
| A-13 | -66 23.378 | 110 59.743 | Drum - Price's Corner - Browning turnoff | 531 |
| A-14 | -66 25.635 | 111 03.718 | Drum | 572 |
| A-15 | -66 27.824 | 111 07.628 | Drum | 611 |
| A-16 | -66 30.002 | 111 11.576 | Drum | 649 |
| A-17 | -66 32.215 | 111 15.418 | Drum | 688 |
| A-18 | -66 34.364 | 111 19.406 | Drum | 719 |
| A-19 | -66 36.588 | 111 23.258 | Drum | 745 |
| A-20 | -66 38.802 | 111 27.273 | Drum | 749 |
| A-21 | -66 40.236 | 111 28.767 | No marker - Hold and Report Point | 735 |
| A-22 | -66 40.875 | 111 29.670 | No marker | 730 |
| ARCAMP | -66 41.191 | 111 29.332 | Wilkins Runway Camp | 730 |