

Windmill Islands

Map 4 of 5

Edition 4

Horizontal Datum: WGS84
Projection: UTM Zone 49

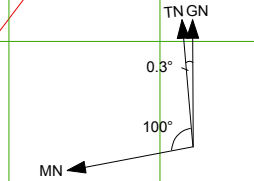


Scale 1 : 50 000

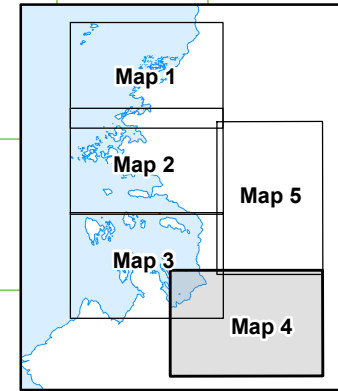
Produced by the Australian Antarctic Data Centre
August 2009, Map Catalogue Number: 13654
© Commonwealth of Australia



Australian Government
Department of the Environment,
Water, Heritage and the Arts
Australian Antarctic Division



True, Grid and Magnetic North are shown diagrammatically for the centre of this map. Magnetic North is correct for 2009 and moves westerly by about 0.12° per year.



Casey Waypoint Information

August 2009

Law Dome Route

Wpt Name	Latitude	Longitude	Wpt Description	Alt (m)
A-00	-66 16.938	110 31.622	Red Shed Heli Pad	43
A-01	-66 16.934	110 32.104	Lower Heli Pads	37
A-02	-66 17.103	110 32.226	Drum - station side of Penguin Pass	45
A-03	-66 17.362	110 32.645	Drum	41
A-04	-66 17.335	110 33.376	Flour drum on pole - Robbo's turnoff	45
A-05	-66 17.258	110 34.328	Drum	54
A-06	-66 17.153	110 35.604	Flour drum on pole - Wilkes turnoff	100
A-07	-66 17.074	110 36.579	Flour drum on pole	147
A-08	-66 16.936	110 39.372	Drum - S1 - Jack's / Law Dome / Skiway turnoff	242
D-01	-66 17.152	110 41.631	Flour drum on steel pole	295
D-02	-66 18.739	110 51.740	Drum (signpost & radio masts) - Lanyon Junction	480
D-03	-66 19.256	110 55.353	Cane	520
D-04	-66 19.894	110 59.892	Flour drum x 2 on steel pole	562
D-05	-66 20.653	111 05.260	Steel pole (just visible)	616
D-06	-66 21.377	111 10.466	Drum (just visible) & steel pole	669
D-07	-66 22.176	111 16.266	Drum (half buried)	728
D-08	-66 22.699	111 19.942	Cane	755
D-09	-66 23.281	111 24.086	Cane	796
D-10	-66 24.059	111 29.586	Drum (just visible)	847
D-11	-66 24.752	111 34.508	Drum	885
D-12	-66 25.483	111 39.686	Steel pole	930
D-13	-66 26.432	111 46.422	Steel pole	971
D-14	-66 26.981	111 50.770	Cane	1007
D-15	-66 27.341	111 54.423	Cane	1024
D-16	-66 27.556	111 57.234	2 Steel poles - Blyth Junction	1040
D-17	-66 28.626	112 00.655	Drum & steel pole	1071
D-18	-66 29.920	112 04.771	Cane	1106
D-19	-66 30.861	112 07.854	Cane	1136
D-20	-66 31.300	112 09.243	Cane	1143
D-21	-66 31.916	112 11.218	No marker	1159
D-22	-66 31.952	112 11.351	No marker - S2 Hatch turnoff	1159
D-23	-66 33.567	112 16.638	Antarctic Circle sign	1196
D-24	-66 35.759	112 23.653	Cane	1243
D-25	-66 36.887	112 27.355	Cane	1275
D-26	-66 38.108	112 31.422	Cane	1300
D-27	-66 39.750	112 36.856	Cane	1329
D-28	-66 41.601	112 42.930	Cane	1372
D-29	-66 43.938	112 45.389	No marker	1382
DSSHAT	-66 46.151	112 48.440	Cane x 2 - DSS Entry Hatch	1385

Wilkes Route

Wpt Name	Latitude	Longitude	Wpt Description	Alt (m)
A-00	-66 16.938	110 31.622	Red Shed Heli Pad	43
A-01	-66 16.934	110 32.104	Lower Heli Pads	37
A-02	-66 17.103	110 32.226	Drum - station side of Penguin Pass	45
A-03	-66 17.362	110 32.645	Drum	41
A-04	-66 17.335	110 33.376	Flour drum on pole - Robbo's turnoff	45
A-05	-66 17.258	110 34.328	Drum	54
A-06	-66 17.153	110 35.604	Flour drum on pole - Wilkes turnoff	100
W-01	-66 16.623	110 36.135	Drum	
W-02	-66 16.350	110 35.661	Flour drum on pole	
W-03	-66 15.818	110 34.761	Drum	
W-04	-66 15.709	110 34.461	Flour drum on pole	
W-05	-66 15.725	110 33.845	Drum - stay N to avoid crevassing	
W-06	-66 15.701	110 33.565	Drum - stay N to avoid crevassing	
W-07	-66 15.538	110 33.369	Drum - Stay NE to avoid crevassing	11
W-08	-66 15.503	110 32.531	Drum	
W-09	-66 15.423	110 32.050	Drum	
WILHIL	-66 15.405	110 32.088	Wilkes Hilton	

Wilkins Runway Route

Wpt Name	Latitude	Longitude	Wpt Description	Alt (m)
A-00	-66 16.938	110 31.622	Red Shed Heli Pad	43
A-01	-66 16.934	110 32.104	Lower Heli Pads	37
A-02	-66 17.103	110 32.226	Drum - station side of Penguin Pass	45
A-03	-66 17.362	110 32.645	Drum	41
A-04	-66 17.335	110 33.376	Flour drum on pole - Robbo's turnoff	45
A-05	-66 17.258	110 34.328	Drum	54
A-06	-66 17.153	110 35.604	Flour drum on pole - Wilkes turnoff	100
A-07	-66 17.074	110 36.579	Flour drum on pole	147
A-08	-66 16.936	110 39.372	Drum - S1 - Jack's / Law Dome / Skiway turnoff	242
A-09	-66 19.139	110 44.212	Drum	361
A-10	-66 20.188	110 48.139	Drum	410
A-11	-66 21.261	110 52.014	Drum	448
A-12	-66 22.306	110 55.886	Drum	482
A-13	-66 23.378	110 59.743	Drum - Price's Corner - Browning turnoff	531
A-14	-66 25.635	111 03.718	Drum	572
A-15	-66 27.824	111 07.628	Drum	611
A-16	-66 30.002	111 11.576	Drum	649
A-17	-66 32.215	111 15.418	Drum	688
A-18	-66 34.364	111 19.406	Drum	719
A-19	-66 36.588	111 23.258	Drum	745
A-20	-66 38.802	111 27.273	Drum	749
A-21	-66 40.236	111 28.767	No marker - Hold and Report Point	735
A-22	-66 40.875	111 29.670	No marker	730
ARCAMP	-66 41.191	111 29.332	Wilkins Runway Camp	730

Jack's Donga Route

Wpt Name	Latitude	Longitude	Wpt Description	Alt (m)
A-00	-66 16.938	110 31.622	Red Shed Heli Pad	43
A-01	-66 16.934	110 32.104	Lower Heli Pads	37
A-02	-66 17.103	110 32.226	Drum - station side of Penguin Pass	45
A-03	-66 17.362	110 32.645	Drum	41
A-04	-66 17.335	110 33.376	Flour drum on pole - Robbo's turnoff	45
A-05	-66 17.258	110 34.328	Drum	54
A-06	-66 17.153	110 35.604	Flour drum on pole - Wilkes turnoff	100
A-07	-66 17.074	110 36.579	Flour drum on pole	147
A-08	-66 16.936	110 39.372	Drum - S1 - Jack's / Law Dome / Skiway turnoff	242
J-01	-66 15.383	110 39.214	Cane	184
J-02	-66 14.445	110 39.923	Cane	147
J-03	-66 13.841	110 39.606	Drum - fallen	103
JACDON	-66 13.720	110 39.191	Jack's Donga	

Robinsons Ridge Route

Wpt Name	Latitude	Longitude	Wpt Description	Alt (m)
A-00	-66 16.938	110 31.622	Red Shed Heli Pad	43
A-01	-66 16.934	110 32.104	Lower Heli Pads	37
A-02	-66 17.103	110 32.226	Drum - station side of Penguin Pass	45
A-03	-66 17.362	110 32.645	Drum	41
A-04	-66 17.335	110 33.376	Flour drum on pole - Robbo's turnoff	45
R-01	-66 17.473	110 33.799	Drum	57
R-02	-66 18.687	110 35.746	Drum - Mitchell Peninsula turnoff	122
R-03	-66 19.486	110 37.016	Drum	183
R-04	-66 20.067	110 38.232	Drum (half buried)	215
R-05	-66 21.154	110 40.503	Drum - high point on route	272
R-06	-66 21.483	110 40.031	Cane x 2 & steel pole	237
R-07	-66 22.459	110 38.846	Drum	140
R-08	-66 22.114	110 37.784	Drum	114
R-09	-66 22.159	110 36.136	Drum	66
R-10	-66 22.197	110 35.995	Flour drum on pole	65
R-11	-66 22.331	110 35.793	Drum - stay close to avoid ice cliffs	62
ROBHUT	-66 22.405	110 35.129	Robinsons Ridge Hut	47

CAUTION: Absence of the depiction of crevasses does not necessarily indicate a crevasse free area.

Legend

- 102 Spot height
 - A-07 Route, Waypoint
 - - - - - Ski route/sea ice route
Sea ice routes are approximate
 - - - - - Crevasse
 - ||||| Ice cliff
 - ||||| Rock cliff
 - - - - - Contour (20m interval)
definite/approximate
 - - - - - Contour (100m interval)
definite/approximate
 - Ice-free area
 - Moraine
- Cliffs, crevasses, ice-free areas, lakes and moraines mapped from aerial photography, January 1994.

