

Windmill Islands

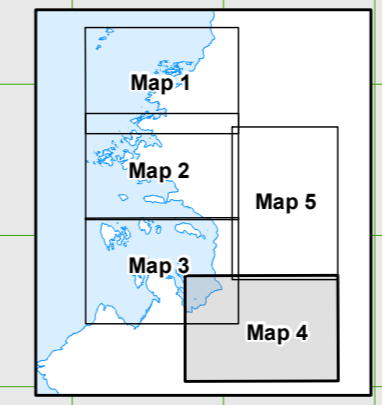
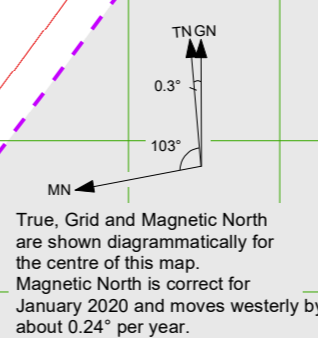
Map 4 of 5

Edition 8

Horizontal Datum: WGS84
 Projection: UTM Zone 49

Scale 1 : 50 000

Produced by the Australian Antarctic Data Centre
 July 2019, Map Catalogue Number: 15272
 © Commonwealth of Australia 2019



CAUTION: Absence of the depiction of hazards, including crevasses, does not necessarily indicate a hazard free area.

- ### Legend
- 102 Spot elevation
 - A-07 Route, Waypoint
 - Ski route/sea ice route
Sea ice routes are approximate
 - - - Crevasse
 - ||| Ice cliff
 - Rock cliff
 - - - Contour (20m interval) definite/approximate
 - - - Contour (100m interval) definite/approximate
 - Ice-free area
 - Moraine
 - Cliffs, crevasses, ice-free areas, lakes and moraines mapped from aerial photography, January 1994.

Jack's Donga Route

Wpt Name	Latitude	Longitude	Wpt Description	Alt (m)
A-00	-66 16.938	110 31.622	Red Shed Heli Pad	43
A-01	-66 16.934	110 32.104	Lower Heli Pads	37
A-02	-66 17.103	110 32.226	Drum - station side of Penguin Pass	45
A-02A	-66 17.126	110 32.340	Penguin Pass waypoint	
A-03	-66 17.362	110 32.645	Drum	41
A-04	-66 17.335	110 33.376	Flour drum on pole - Robbo's turnoff	45
A-05	-66 17.258	110 34.328	Drum	54
A-06	-66 17.153	110 35.604	Flour drum on pole - Wilkes turnoff	100
A-07	-66 17.074	110 36.579	Flour drum on pole	147
A-08	-66 16.936	110 39.372	Drum - S1 - Jack's / Law Dome / Skiway turnoff	242
J-01	-66 15.383	110 39.214	Cane	184
J-02	-66 14.445	110 39.923	Cane	147
J-03	-66 13.841	110 39.606	Drum - fallen	103
JACDON	-66 13.720	110 39.191	Jack's Donga	

Wilkes Route

Wpt Name	Latitude	Longitude	Wpt Description	Alt (m)
A-00	-66 16.938	110 31.622	Red Shed Heli Pad	43
A-01	-66 16.934	110 32.104	Lower Heli Pads	37
A-02	-66 17.103	110 32.226	Drum - station side of Penguin Pass	45
A-02A	-66 17.126	110 32.340	Penguin Pass waypoint	
A-03	-66 17.362	110 32.645	Drum	41
A-04	-66 17.335	110 33.376	Flour drum on pole - Robbo's turnoff	45
A-05	-66 17.258	110 34.328	Drum	54
A-06	-66 17.153	110 35.604	Flour drum on pole - Wilkes turnoff	100
W-01	-66 16.623	110 36.135	Drum	
W-02	-66 16.350	110 35.661	Flour drum on pole	
W-03	-66 15.818	110 34.761	Drum	
W-04	-66 15.709	110 34.461	Flour drum on pole	
W-05	-66 15.550	110 34.410		
W-06	-66 15.436	110 34.881		
W-07	-66 15.399	110 34.007		
W-08	-66 15.498	110 33.777		
W-09	-66 15.538	110 33.369	Drum - Stay NE to avoid crevassing	11
W-10	-66 15.503	110 32.531	Drum	
W-11	-66 15.423	110 32.050	Drum	
WILHIL	-66 15.405	110 32.088	Wilkes Hilton	

Law Dome Route

Wpt Name	Latitude	Longitude	Wpt Description	Alt (m)
A-00	-66 16.938	110 31.622	Red Shed Heli Pad	43
A-01	-66 16.934	110 32.104	Lower Heli Pads	37
A-02	-66 17.103	110 32.226	Drum - station side of Penguin Pass	45
A-02A	-66 17.126	110 32.340	Penguin Pass waypoint	
A-03	-66 17.362	110 32.645	Drum	41
A-04	-66 17.335	110 33.376	Flour drum on pole - Robbo's turnoff	45
A-05	-66 17.258	110 34.328	Drum	54
A-06	-66 17.153	110 35.604	Flour drum on pole - Wilkes turnoff	100
A-07	-66 17.074	110 36.579	Flour drum on pole	147
A-08	-66 16.936	110 39.372	Drum - S1 - Jack's / Law Dome / Skiway turnoff	242
D-01	-66 17.152	110 41.631	Flour drum on steel pole	295
D-02	-66 18.739	110 51.740	Drum (signpost & radio masts) - Lanyon Junction	480
D-03	-66 19.256	110 55.353	Cane	520
D-04	-66 19.894	110 59.892	Flour drum x 2 on steel pole	562
D-05	-66 20.653	111 05.260	Steel pole (just visible)	616
D-06	-66 21.377	111 10.466	Drum (just visible) & steel pole	669
D-07	-66 22.176	111 16.266	Drum (half buried)	728
D-08	-66 22.699	111 19.942	Cane	755
D-09	-66 23.281	111 24.086	Cane	796
D-10	-66 24.059	111 29.586	Drum (just visible)	847
D-11	-66 24.752	111 34.508	Drum	885
D-12	-66 25.483	111 39.686	Steel pole	930
D-13	-66 26.432	111 46.422	Steel pole	971
D-14	-66 26.981	111 50.770	Cane	1007
D-15	-66 27.341	111 54.423	Cane	1024
D-16	-66 27.556	111 57.234	2 Steel poles - Blyth Junction	1040
D-17	-66 28.626	112 00.655	Drum & steel pole	1071
D-18	-66 29.920	112 04.771	Cane	1106
D-19	-66 30.861	112 07.854	Cane	1136
D-20	-66 31.300	112 09.243	Cane	1143
D-21	-66 31.916	112 11.218	No marker	1159
D-22	-66 31.952	112 11.351	No marker - S2 Hatch turnoff	1159
D-23	-66 33.567	112 16.638	Antarctic Circle sign	1196
D-24	-66 35.759	112 23.653	Cane	1243
D-25	-66 36.887	112 27.355	Cane	1275
D-26	-66 38.108	112 31.422	Cane	1300
D-27	-66 39.750	112 36.856	Cane	1329
D-28	-66 41.601	112 42.930	Cane	1372
D-29	-66 43.938	112 45.389	No marker	1382
DSSHAT	-66 46.151	112 48.440	Cane x 2 - DSS Entry Hatch	1385

Robnsons Ridge Route

Wpt Name	Latitude	Longitude	Wpt Description	Alt (m)
A-00	-66 16.938	110 31.622	Red Shed Heli Pad	43
A-01	-66 16.934	110 32.104	Lower Heli Pads	37
A-02	-66 17.103	110 32.226	Drum - station side of Penguin Pass	45
A-02A	-66 17.126	110 32.340	Penguin Pass waypoint	
A-03	-66 17.362	110 32.645	Drum	41
A-04	-66 17.335	110 33.376	Flour drum on pole - Robbo's turnoff	45
R-01	-66 17.473	110 33.799	Drum	57
R-02	-66 18.687	110 35.746	Drum - Mitchell Peninsula turnoff	122
R-03	-66 19.486	110 37.016	Drum	183
R-04	-66 20.067	110 38.232	Drum (half buried)	215
R-05	-66 21.154	110 40.503	Drum - high point on route	272
R-06	-66 21.483	110 40.031	Cane x 2 & steel pole	237
R-07	-66 22.459	110 38.846	Drum	140
R-08	-66 22.114	110 37.784	Drum	114
R-09	-66 22.159	110 36.136	Drum	66
R-10	-66 22.197	110 35.995	Flour drum on pole	65
R-11	-66 22.331	110 35.793	Drum - stay close to avoid ice cliffs	62
ROBHUT	-66 22.405	110 35.129	Robnsons Ridge Hut	47

Wilkins Runway Route

Wpt Name	Latitude	Longitude	Wpt Description	Alt (m)
A-00	-66 16.938	110 31.622	Red Shed Heli Pad	43
A-01	-66 16.934	110 32.104	Lower Heli Pads	37
A-02	-66 17.103	110 32.226	Drum - station side of Penguin Pass	45
A-02A	-66 17.126	110 32.340	Penguin Pass waypoint	
A-03	-66 17.362	110 32.645	Drum	41
A-04	-66 17.335	110 33.376	Flour drum on pole - Robbo's turnoff	45
A-05	-66 17.258	110 34.328	Drum	54
A-06	-66 17.153	110 35.604	Flour drum on pole - Wilkes turnoff	100
A-07	-66 17.074	110 36.579	Flour drum on pole	147
A-08	-66 16.936	110 39.372	Drum - S1 - Jack's / Law Dome / Skiway turnoff	242
A-09	-66 19.139	110 44.212	Drum	361
A-10	-66 20.188	110 48.139	Drum	410
A-11	-66 21.261	110 52.014	Drum	448
A-12	-66 22.306	110 55.886	Drum	482
A-13	-66 23.378	110 59.743	Drum - Price's Corner - Browning turnoff	531
A-14	-66 25.635	111 03.718	Drum	572
A-15	-66 27.824	111 07.628	Drum	611
A-16	-66 30.002	111 11.576	Drum	649
A-17	-66 32.215	111 15.418	Drum	688
A-18	-66 34.364	111 19.406	Drum	719
A-19	-66 36.588	111 23.258	Drum	745
A-20	-66 38.802	111 27.273	Drum	749
A-21	-66 40.236	111 28.767	No marker - Hold and Report Point	735
A-22	-66 40.875	111 29.670	No marker	730
ARCAMP	-66 41.203	111 29.280	Wilkins Aerodrome Camp	
ARMESS	-66 41.206	111 29.221	Wilkins Aerodrome Camp	